

Courtesy Of Lamia M Alakra Of Century 21 Leading

\$199,900 - 306 4304 139 Avenue, Edmonton

MLS® #E4417550

\$199,900

2 Bedroom, 2.00 Bathroom, 1,063 sqft
Condo / Townhouse on 0.00 Acres

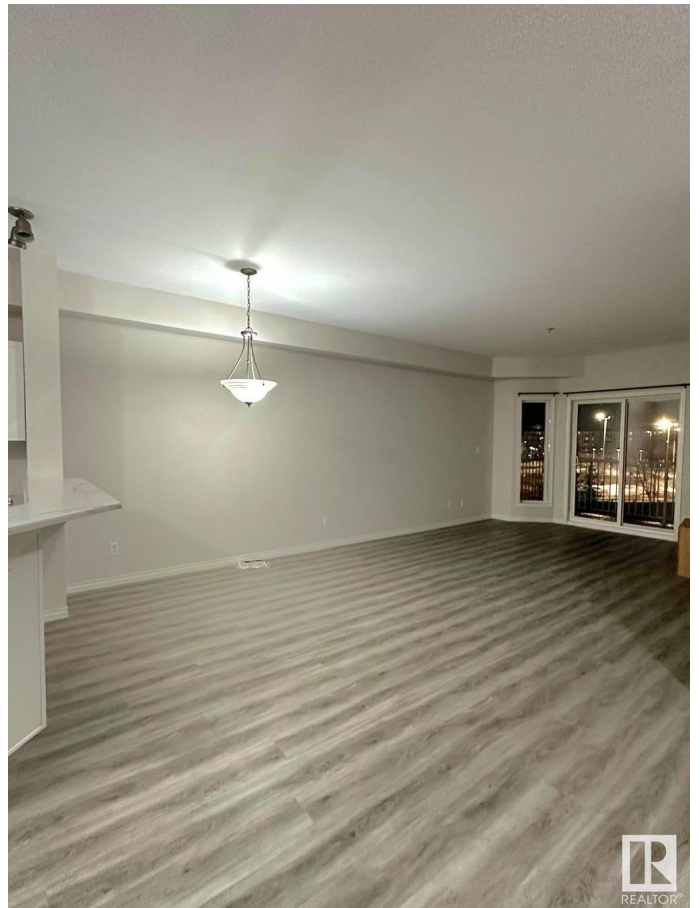
Clareview Town Centre, Edmonton, AB

Check out this Beautiful Newly Renovated 2 Bedroom, 2 Full Bathroom Condo, located in the heart of Clareview Town Centre. This Unit features New Kitchen Cabinets with a raised eating bar and New appliances , a spacious Living Room with patio doors leading you to your balcony, Dining Room, and a Master Bedroom which has a walk in closet and an ensuite bathroom. The Second Bedroom is a great size also. This unit has a In Suite Laundry Room with storage area as well as a heated underground parking stall, and a car wash bay. This Unit just had new upgrades with New Paint, New Flooring, Carpet and Laminated hardwood and Linoleum, New Appliances, Newer Stack washer/Dyer, New Kitchen Cabinets. This is a great Move In property for a first time home buyer or a great rental property. An added bonus is that the LRT is right across the street. Early possession, move in condition, full of pride.

Built in 2006

Essential Information

MLS® #	E4417550
Price	\$199,900
Bedrooms	2
Bathrooms	2.00
Full Baths	2



Square Footage	1,063
Acres	0.00
Year Built	2006
Type	Condo / Townhouse
Sub-Type	Lowrise Apartment
Style	Single Level Apartment
Status	Active

Community Information

Address	306 4304 139 Avenue
Area	Edmonton
Subdivision	Clareview Town Centre
City	Edmonton
County	ALBERTA
Province	AB
Postal Code	T5Y 0H6

Amenities

Amenities	Exercise Room, Parking-Visitor, Secured Parking, Security Door, Storage Cage
Parking Spaces	1
Parking	Underground

Interior

Interior Features	ensuite bathroom
Appliances	Dishwasher-Built-In, Dryer, Microwave Hood Fan, Refrigerator, Stove-Electric, Washer
Heating	Forced Air-1, Natural Gas
# of Stories	4
Stories	1
Has Basement	Yes
Basement	None, No Basement

Exterior

Exterior	Wood, Stucco
Exterior Features	Fenced, Flat Site, Golf Nearby, Low Maintenance Landscape, Park/Reserve, Playground Nearby, Public Swimming Pool, Public Transportation, Shopping Nearby
Roof	Asphalt Shingles

Construction Wood, Stucco
Foundation Concrete Perimeter

Additional Information

Date Listed January 10th, 2025
Days on Market 85
Zoning Zone 35
Condo Fee \$768



DATA IS DEEMED RELIABLE BUT IS NOT GUARANTEED ACCURATE BY THE REALTORS® ASSOCIATION OF EDMONTON. COPYRIGHT 2025 BY THE REALTORS® ASSOCIATION OF EDMONTON. ALL RIGHTS RESERVED. Trademarks are owned or controlled by the Canadian Real Estate Association (CREA) and identify real estate professionals who are members of CREA (REALTOR®, REALTORS®) and/or the quality of services they provide (MLS®, Multiple Listing Service®)

Listing information last updated on April 5th, 2025 at 12:47am MDT