

Courtesy Of Brice J Laidler Of Black Sheep Realty

## \$645,000 - 2615 Hanna Crescent, Edmonton

MLS® #E4417605

**\$645,000**

4 Bedroom, 3.50 Bathroom, 2,194 sqft

Single Family on 0.00 Acres

Haddow, Edmonton, AB

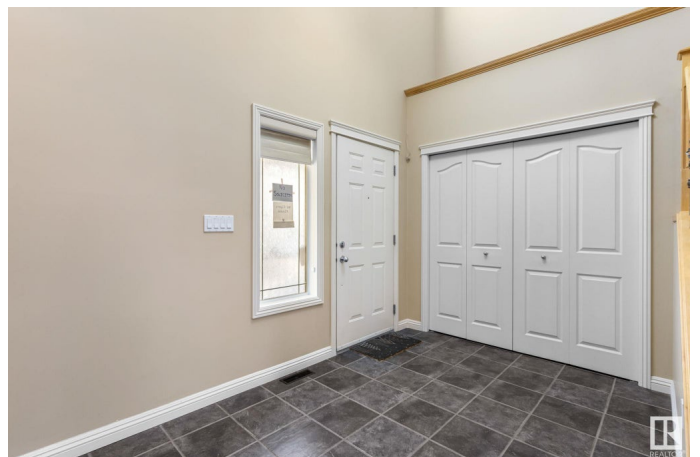
Welcome to this stunning, well-kept family home tucked away on a quiet street in Haddow, just minutes from Terwillegar Drive. With 2193 SqFt of open-concept living, 4 bedrooms, and 3.5 bathrooms, this home is designed for comfort and functionality. The impressive foyer with 17 ft ceilings leads to a flexible den or dining room and a bright living area perfect for entertaining. The kitchen shines with granite countertops, black appliances, a corner pantry, tile backsplash, and a spacious island. Upstairs, the bonus room offers a cozy space for relaxing or play. The primary suite includes a luxurious 4-piece ensuite with a soaker tub and separate shower, while two more bedrooms and a full bath complete the upper level. The finished basement features a large rec room, a fourth bedroom, a full bathroom, and an optional second laundry. Enjoy the west-facing backyard with a maintenance-free deck and storage shed. Additional highlights include A/C, gas fireplace, a mudroom, and hardwood flooring throughout

Built in 2004

### Essential Information

MLS® # E4417605

Price \$645,000



Bedrooms	4
Bathrooms	3.50
Full Baths	3
Half Baths	1
Square Footage	2,194
Acres	0.00
Year Built	2004
Type	Single Family
Sub-Type	Detached Single Family
Style	2 Storey
Status	Active

### **Community Information**

Address	2615 Hanna Crescent
Area	Edmonton
Subdivision	Haddow
City	Edmonton
County	ALBERTA
Province	AB
Postal Code	T6R 3C9

### **Amenities**

Amenities	Air Conditioner, Closet Organizers, Deck, No Animal Home, No Smoking Home, Vinyl Windows, Vacuum System-Roughed-In
Parking	Double Garage Attached

### **Interior**

Interior Features	ensuite bathroom
Appliances	Dishwasher-Built-In, Dryer, Refrigerator, Storage Shed, Stove-Electric, Washer, Window Coverings
Heating	Forced Air-1, Natural Gas
Fireplace	Yes
Fireplaces	Mantel, Tile Surround
Stories	3
Has Basement	Yes
Basement	Full, Finished

### **Exterior**

Exterior	Wood, Brick, Vinyl
----------	--------------------

Exterior Features	Fenced, Golf Nearby, Landscaped, Playground Nearby, Public Transportation, Schools, Shopping Nearby
Roof	Asphalt Shingles
Construction	Wood, Brick, Vinyl
Foundation	Concrete Perimeter

### **Additional Information**

Date Listed January 10th, 2025

Days on Market 86

Zoning Zone 14

DATA IS DEEMED RELIABLE BUT IS NOT GUARANTEED ACCURATE BY THE REALTORS® ASSOCIATION OF EDMONTON. COPYRIGHT 2025 BY THE REALTORS® ASSOCIATION OF EDMONTON. ALL RIGHTS RESERVED. Trademarks are owned or controlled by the Canadian Real Estate Association (CREA) and identify real estate professionals who are members of CREA (REALTOR®, REALTORS®) and/or the quality of services they provide (MLS®, Multiple Listing Service®)

Listing information last updated on April 6th, 2025 at 11:47am MDT