

\$127,500 - 210 13910 Stony Plain Road, Edmonton

MLS® #E4420087

\$127,500

2 Bedroom, 1.00 Bathroom, 1,059 sqft

Condo / Townhouse on 0.00 Acres

Glenora, Edmonton, AB

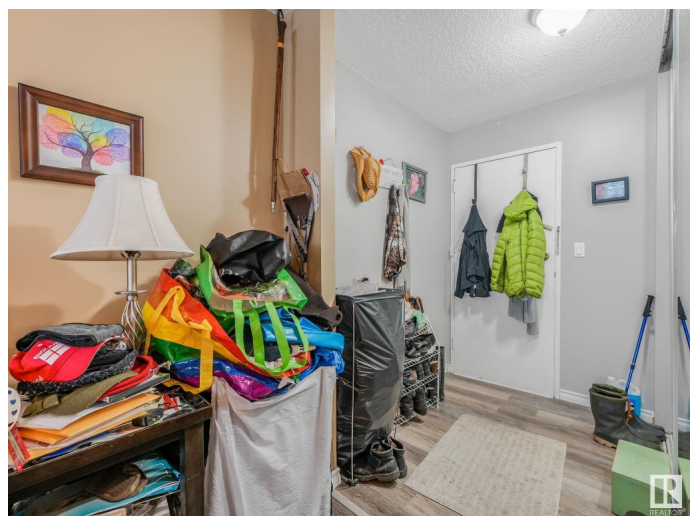
Exceptional value minutes from downtown! This large 2 bedroom unit in Crescent Place Glenora features a large living room, galley kitchen, dining room, massive primary bedroom with twin closets, four piece bathroom, a large second bedroom, as well as an in suite storage room. Additional features include a south facing balcony, same floor laundry, and underground parking. Condo fees include all utilities and also feature an indoor saltwater pool, on-site management, sauna, gym, and party room.

Built in 1969

Essential Information

| | |
|----------------|------------------------|
| MLS® # | E4420087 |
| Price | \$127,500 |
| Bedrooms | 2 |
| Bathrooms | 1.00 |
| Full Baths | 1 |
| Square Footage | 1,059 |
| Acres | 0.00 |
| Year Built | 1969 |
| Type | Condo / Townhouse |
| Sub-Type | Apartment High Rise |
| Style | Single Level Apartment |
| Status | Active |

Community Information



| | |
|-------------|----------------------------|
| Address | 210 13910 Stony Plain Road |
| Area | Edmonton |
| Subdivision | Glenora |
| City | Edmonton |
| County | ALBERTA |
| Province | AB |
| Postal Code | T5N 3R2 |

Amenities

| | |
|-----------|---|
| Amenities | Intercom, Parking-Visitor, Pool-Indoor, Security Door, Social Rooms, Storage-In-Suite |
| Parking | Heated, Underground |
| Has Pool | Yes |

Interior

| | |
|--------------|------------------------|
| Appliances | None |
| Heating | Hot Water, Natural Gas |
| # of Stories | 18 |
| Stories | 1 |
| Has Basement | Yes |
| Basement | None, No Basement |

Exterior

| | |
|-------------------|--|
| Exterior | Concrete, Brick |
| Exterior Features | Public Transportation, Schools, Shopping Nearby, See Remarks |
| Roof | Tar & Gravel |
| Construction | Concrete, Brick |
| Foundation | Concrete Perimeter |

Additional Information

| | |
|----------------|--------------------|
| Date Listed | January 31st, 2025 |
| Days on Market | 67 |
| Zoning | Zone 11 |
| Condo Fee | \$977 |

DATA IS DEEMED RELIABLE BUT IS NOT GUARANTEED ACCURATE BY THE REALTORS® ASSOCIATION OF EDMONTON. COPYRIGHT 2025 BY THE REALTORS® ASSOCIATION OF EDMONTON. ALL RIGHTS RESERVED. Trademarks are owned or controlled by the Canadian Real Estate Association (CREA) and identify real estate professionals who are members of CREA (REALTOR®, REALTORS®) and/or the quality of services they provide (MLS®, Multiple Listing Service®)

Listing information last updated on April 8th, 2025 at 1:02pm MDT