

\$649,500 - #414 100 Foxhaven Drive, Sherwood Park

MLS® #E4420337

\$649,500

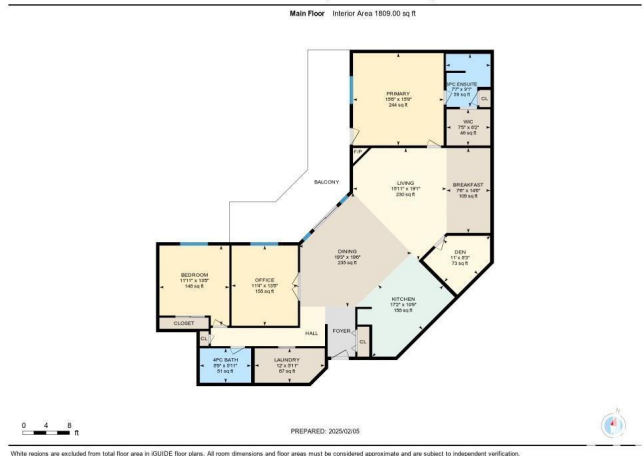
2 Bedroom, 2.00 Bathroom, 1,810 sqft
Condo / Townhouse on 0.00 Acres

Foxhaven, Sherwood Park, AB

VERY SPACIOUS, AIR CONDITIONED, TOTALLY RENOVATED 1809 SQ FT PENTHOUSE CONDOMINIUM OVERLOOKING THE COURTYARD AND HERITAGE LAKE. OVER 1900 SQ FT INCLUDING THE BALCONY. A VERY OPEN FLOOR PLAN FEATURING 2 BEDROOMS, DEN, 2 FULL BATHS, AND A COMPUTER ROOM. RENOVATIONS INCLUDE TOP OF THE LINE FLOATING LAMINATE FLOORING ON TOP OF A FOAM SOUND BARRIER, DESIGNER WHITE CABINETS, 6 CEILING FANS, ELECTRIC PANEL, SMOOTH CEILING, PAINT, AIR CONDITIONERS, QUARTZ COUNTERTOPS, & STAINLESS STEEL APPLIANCES. A VERY SPECIAL FEATURE OF THE PROPERTY IS THE FULL LENGTH BALCONY WITH A WONDERFUL VIEW. HERITAGE TRAIL GOES RIGHT BESIDE THE BUILDING AND RUNS BETWEEN HERITAGE LAKE AND THE WETLANDS - NATURE AT IT'S BEST OFTEN INHABITED BY PELICANS. THE COMPLEX COMES WITH AN EXERCISE ROOM, BILLIARD ROOM, LIBRARY AND ONE TITLED PARKING STALL. A GOERGEIOUS HOME IN A WONDERFUL SETTING.



414-100 Foxhaven Dr, Sherwood Park, AB



Built in 2000

Essential Information

MLS® #	E4420337
Price	\$649,500
Bedrooms	2
Bathrooms	2.00
Full Baths	2
Square Footage	1,810
Acres	0.00
Year Built	2000
Type	Condo / Townhouse
Sub-Type	Lowrise Apartment
Style	Single Level Apartment
Status	Active

Community Information

Address	#414 100 Foxhaven Drive
Area	Sherwood Park
Subdivision	Foxhaven
City	Sherwood Park
County	ALBERTA
Province	AB
Postal Code	T8A 6B6

Amenities

Amenities	Deck, Exercise Room, Exterior Walls- 2"x6", No Animal Home, No Smoking Home, Party Room, Secured Parking, Security Door, Social Rooms, Sprinkler System-Fire, Storage Cage
Parking Spaces	1
Parking	Heated, Underground
Is Waterfront	Yes

Interior

Interior Features	ensuite bathroom
Appliances	Dishwasher-Built-In, Dryer, Oven-Microwave, Refrigerator, Stove-Electric, Washer, Window Coverings
Heating	Hot Water, Natural Gas
Fireplace	Yes
Fireplaces	Glass Door
# of Stories	4
Stories	1

Has Basement Yes
Basement None, No Basement

Exterior

Exterior Wood, Brick, Composition, Vinyl
Exterior Features Backs Onto Lake, Backs Onto Park/Trees, Landscaped, No Back Lane, Private Fishing, Public Transportation, View Lake
Roof Asphalt Shingles
Construction Wood, Brick, Composition, Vinyl
Foundation Concrete Perimeter

Additional Information

Date Listed February 4th, 2025
Days on Market 60
Zoning Zone 25
Condo Fee \$981

DATA IS DEEMED RELIABLE BUT IS NOT GUARANTEED ACCURATE BY THE REALTORS® ASSOCIATION OF EDMONTON. COPYRIGHT 2025 BY THE REALTORS® ASSOCIATION OF EDMONTON. ALL RIGHTS RESERVED. Trademarks are owned or controlled by the Canadian Real Estate Association (CREA) and identify real estate professionals who are members of CREA (REALTOR®, REALTORS®) and/or the quality of services they provide (MLS®, Multiple Listing Service®)

Listing information last updated on April 4th, 2025 at 11:47pm MDT