

\$425,000 - 7 10050 118 Street, Edmonton

MLS® #E4421570

\$425,000

2 Bedroom, 2.00 Bathroom, 1,551 sqft
Condo / Townhouse on 0.00 Acres

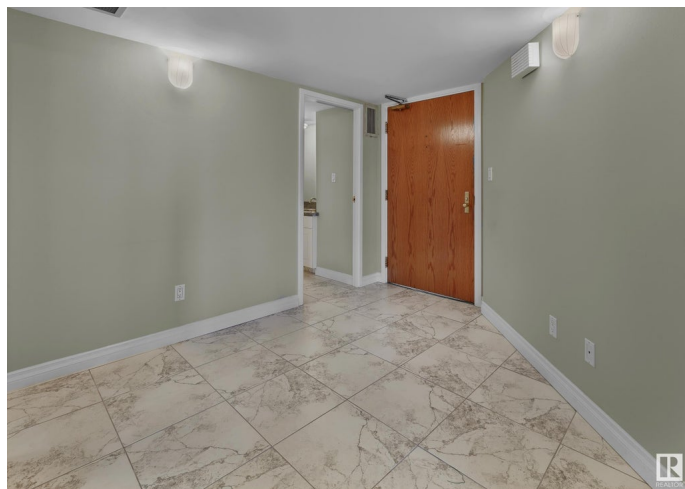
WÃ@hkwÃªntÃ´win, Edmonton, AB

Welcome to Park Place â€“ where style meets serenity in this beautifully upgraded 7th-floor corner condo! Nestled in a quiet, concrete building just steps from Jasper Avenue and the scenic Victoria Promenade, this 2-bedroom, 2-bathroom unit offers breathtaking city and river valley views from every room, including the private balcony. Over \$100K in professional upgrades shine throughout, featuring custom cabinetry, solid hardwood floors, renovated bathrooms, and a stunning Kitchen Craft kitchen with granite countertops and stainless steel appliances. Enjoy the perks of a smoke-free, pet-free home, complete with a titled, heated underground parking stall. A large social room (currently being renovated) is available for hosting gatherings. Don't miss this opportunity to live in one of Edmonton's best locations!

Built in 1981

Essential Information

MLS® #	E4421570
Price	\$425,000
Bedrooms	2
Bathrooms	2.00
Full Baths	2
Square Footage	1,551
Acres	0.00



Year Built	1981
Type	Condo / Townhouse
Sub-Type	Apartment High Rise
Style	Single Level Apartment
Status	Active

Community Information

Address	7 10050 118 Street
Area	Edmonton
Subdivision	W&hkw&antwin
City	Edmonton
County	ALBERTA
Province	AB
Postal Code	T5K 2M8

Amenities

Amenities	Deck, Social Rooms, Storage-In-Suite
Parking	Heated, Underground

Interior

Interior Features	ensuite bathroom
Appliances	Air Conditioning-Central, Dishwasher-Built-In, Dryer, Microwave Hood Fan, Refrigerator, Stove-Electric, Washer, Window Coverings
Heating	Fan Coil, Hot Water, Natural Gas
# of Stories	12
Stories	1
Has Basement	Yes
Basement	None, No Basement

Exterior

Exterior	Concrete, Brick
Exterior Features	Golf Nearby, Public Transportation, River Valley View, Shopping Nearby
Roof	Tar & Gravel
Construction	Concrete, Brick
Foundation	Concrete Perimeter

Additional Information

Date Listed	February 14th, 2025
Days on Market	28

Zoning	Zone 12
Condo Fee	\$970

DATA IS DEEMED RELIABLE BUT IS NOT GUARANTEED ACCURATE BY THE REALTORS® ASSOCIATION OF EDMONTON. COPYRIGHT 2025 BY THE REALTORS® ASSOCIATION OF EDMONTON. ALL RIGHTS RESERVED. Trademarks are owned or controlled by the Canadian Real Estate Association (CREA) and identify real estate professionals who are members of CREA (REALTOR®, REALTORS®) and/or the quality of services they provide (MLS®, Multiple Listing Service®)

Listing information last updated on March 14th, 2025 at 8:17am MDT