

\$589,000 - 2155 51 St, Edmonton

MLS® #E4425323

\$589,000

4 Bedroom, 3.00 Bathroom, 1,932 sqft
Single Family on 0.00 Acres

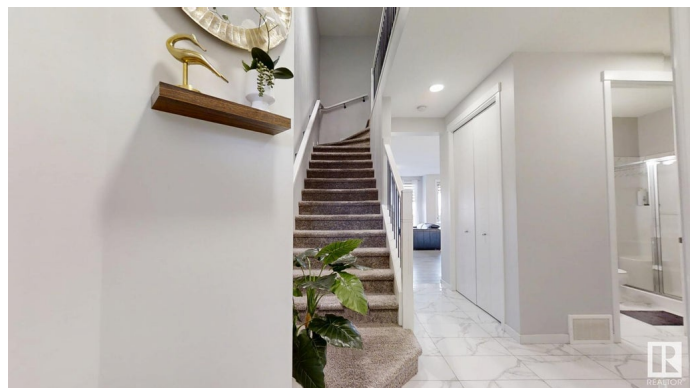
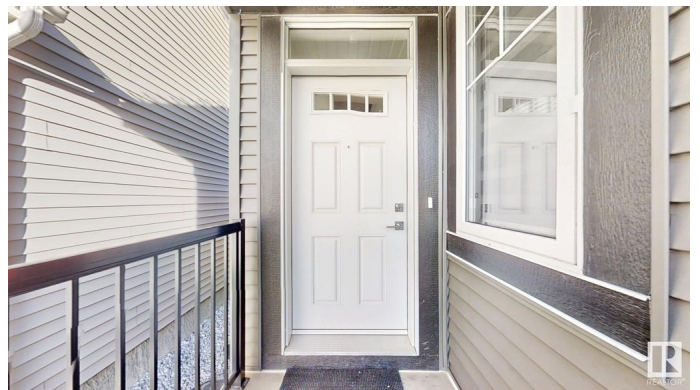
Walker, Edmonton, AB

This beautifully designed detached home offers a well-planned living space, perfect for families. The main floor features a bedroom and full bathroom, ideal for elderly family members. It also includes a modern kitchen with built-in KitchenAid appliances, a butler's pantry, a spacious living and dining area, a cozy fireplace, a laundry room, and a pantry for added convenience. The second floor boasts a spacious family room, a primary suite with a walk-in closet and full ensuite, and two additional generously sized bedrooms—each with its own walk-in closet—along with another full bath. This home is designed for efficiency & comfort, featuring extended driveways, oversized windows, air conditioning, a composite deck, a 600 CFM exhaust fan, a king-size washer and dryer, and tall doors with 9' ceilings. The large backyard offers great outdoor space, with security cameras. A separate basement entrance can be easily built, offering future flexibility. With big bedrooms, modern finishes, and thoughtful upgrades.

Built in 2019

Essential Information

MLS® #	E4425323
Price	\$589,000



Bedrooms	4
Bathrooms	3.00
Full Baths	3
Square Footage	1,932
Acres	0.00
Year Built	2019
Type	Single Family
Sub-Type	Detached Single Family
Style	2 Storey
Status	Active

Community Information

Address	2155 51 St
Area	Edmonton
Subdivision	Walker
City	Edmonton
County	ALBERTA
Province	AB
Postal Code	T6X 2W1

Amenities

Amenities	Air Conditioner, Ceiling 9 ft., Deck
Parking	Double Garage Attached

Interior

Interior Features	ensuite bathroom
Appliances	Dishwasher-Built-In, Dryer, Oven-Microwave, Refrigerator, Washer, Window Coverings
Heating	Forced Air-1, Natural Gas
Fireplace	Yes
Fireplaces	Glass Door
Stories	2
Has Basement	Yes
Basement	Full, Unfinished

Exterior

Exterior	Wood, Stone, Vinyl
Exterior Features	Playground Nearby, Public Transportation, Schools, Shopping Nearby
Roof	Asphalt Shingles

Construction Wood, Stone, Vinyl
Foundation Concrete Perimeter

School Information

Elementary Shauna May Seneca School
Middle Riverbend School
High J Percy Page School

Additional Information

Date Listed March 12th, 2025
Days on Market 24
Zoning Zone 53

DATA IS DEEMED RELIABLE BUT IS NOT GUARANTEED ACCURATE BY THE REALTORS® ASSOCIATION OF EDMONTON. COPYRIGHT 2025 BY THE REALTORS® ASSOCIATION OF EDMONTON. ALL RIGHTS RESERVED. Trademarks are owned or controlled by the Canadian Real Estate Association (CREA) and identify real estate professionals who are members of CREA (REALTOR®, REALTORS®) and/or the quality of services they provide (MLS®, Multiple Listing Service®)

Listing information last updated on April 5th, 2025 at 4:32pm MDT