

# \$135,000 - 401 592 Hooke Road, Edmonton

MLS® #E4425360

**\$135,000**

1 Bedroom, 1.00 Bathroom, 767 sqft  
Condo / Townhouse on 0.00 Acres

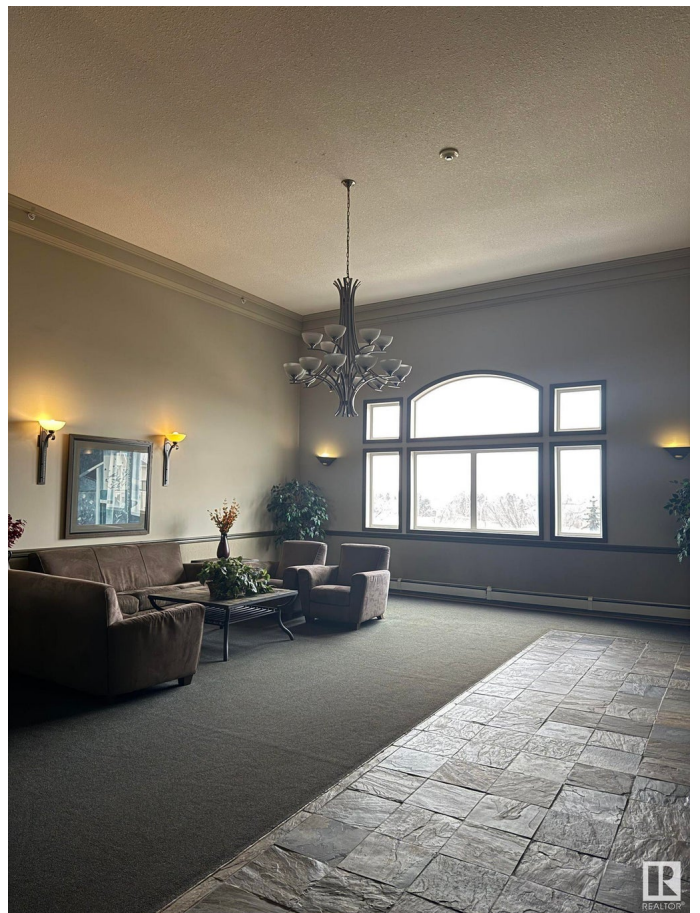
Canon Ridge, Edmonton, AB

Top-floor unit with only one neighbor and a stairwell on the other side. Enjoy city skyline views from the balcony and 4th-floor lobby. This 18+ building allows two cats or one dog (up to 15 inches tall). Spacious, open-concept layout with air conditioning and a built-in electric fireplace. Includes in-suite laundry, ample storage, and a titled underground parking stall with a storage cage. Amenities: Social room with BBQ patio, library, TV, pool table, and shuffleboard. Condo fees cover water, sewer, and heat. Steps from the river valley, Kennedale Ravine, and Hermitage Park's dog park.

Built in 2003

## Essential Information

MLS® #	E4425360
Price	\$135,000
Bedrooms	1
Bathrooms	1.00
Full Baths	1
Square Footage	767
Acres	0.00
Year Built	2003
Type	Condo / Townhouse
Sub-Type	Lowrise Apartment
Style	Single Level Apartment



Status Active

### Community Information

Address 401 592 Hooke Road  
Area Edmonton  
Subdivision Canon Ridge  
City Edmonton  
County ALBERTA  
Province AB  
Postal Code T5A 5H2

### Amenities

Amenities See Remarks  
Parking Heated, Underground

### Interior

Appliances See Remarks  
Heating Forced Air-1, Natural Gas  
# of Stories 4  
Stories 1  
Has Basement Yes  
Basement None, No Basement

### Exterior

Exterior Wood, Vinyl  
Exterior Features Backs Onto Park/Trees, Fenced, Golf Nearby, Landscaped, Playground  
Nearby, Public Transportation, Schools  
Roof Asphalt Shingles  
Construction Wood, Vinyl  
Foundation Concrete Perimeter

### Additional Information

Date Listed March 12th, 2025  
Days on Market 24  
Zoning Zone 35  
Condo Fee \$385

DATA IS DEEMED RELIABLE BUT IS NOT GUARANTEED ACCURATE BY THE REALTORS® ASSOCIATION OF EDMONTON. COPYRIGHT 2025 BY THE REALTORS® ASSOCIATION OF EDMONTON. ALL RIGHTS RESERVED. Trademarks are owned or controlled by the Canadian Real Estate Association (CREA) and identify real estate professionals who are members of CREA (REALTOR®, REALTORS®) and/or the quality of services they

provide (MLS® , Multiple Listing Service®)

Listing information last updated on April 5th, 2025 at 9:47am MDT