

\$369,800 - 804 10142 111 Street, Edmonton

MLS® #E4426277

\$369,800

2 Bedroom, 2.00 Bathroom, 1,148 sqft
Condo / Townhouse on 0.00 Acres

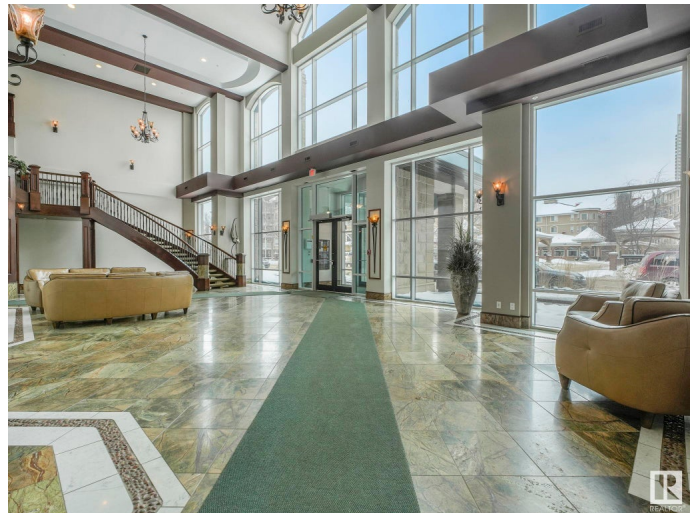
W&hkw&ant&win, Edmonton, AB

Experience the brilliance of this sun-shining corner unit at the prestigious Meridian Plaza in vibrant Downtown Oliver! This executive condo offers 1,148 sq. ft. of refined living with breathtaking south-facing city views from every room. Enjoy abundant year-round sunlight and cozy evenings by the stunning fireplace in the spacious, air-conditioned open-concept living area. The spacious primary suite features a luxurious 5-piece ensuite and a large walk-in closet. The bright second bedroom also offers fantastic views and natural light. The modern kitchen boasts brand-new stainless steel appliances. Benefit from in-suite laundry, a private balcony, titled underground heated parking, and secure storage. Built with solid concrete for superior soundproofing and privacy, this upscale building offers a modern fitness centre, elegant social rooms, a convenient guest suite, and secure visitor parking. LRT stations just steps away, commuting is effortless. Retail strip mall steps away which includes Save-On Food.

Built in 2009

Essential Information

MLS® #	E4426277
Price	\$369,800
Bedrooms	2



Bathrooms	2.00
Full Baths	2
Square Footage	1,148
Acres	0.00
Year Built	2009
Type	Condo / Townhouse
Sub-Type	Apartment High Rise
Style	Single Level Apartment
Status	Active

Community Information

Address	804 10142 111 Street
Area	Edmonton
Subdivision	W&hkw&ant&win
City	Edmonton
County	ALBERTA
Province	AB
Postal Code	T5K 1K6

Amenities

Amenities	Guest Suite, Parking-Visitor, Party Room, Secured Parking, Security Door
Parking Spaces	1
Parking	Heated, Stall, Underground

Interior

Interior Features	ensuite bathroom
Appliances	Dishwasher-Built-In, Hood Fan, Refrigerator, Stacked Washer/Dryer, Stove-Electric
Heating	Forced Air-1, Natural Gas
Fireplace	Yes
Fireplaces	Corner
# of Stories	10
Stories	1
Has Basement	Yes
Basement	None, No Basement

Exterior

Exterior	Concrete, Stucco
----------	------------------

Exterior Features	Public Transportation, Shopping Nearby, View City, View Downtown, See Remarks
Roof	Tar & Gravel
Construction	Concrete, Stucco
Foundation	Concrete Perimeter

Additional Information

Date Listed	March 17th, 2025
Days on Market	31
Zoning	Zone 12
Condo Fee	\$747

DATA IS DEEMED RELIABLE BUT IS NOT GUARANTEED ACCURATE BY THE REALTORS® ASSOCIATION OF EDMONTON. COPYRIGHT 2025 BY THE REALTORS® ASSOCIATION OF EDMONTON. ALL RIGHTS RESERVED. Trademarks are owned or controlled by the Canadian Real Estate Association (CREA) and identify real estate professionals who are members of CREA (REALTOR®, REALTORS®) and/or the quality of services they provide (MLS®, Multiple Listing Service®)

Listing information last updated on April 17th, 2025 at 3:32pm MDT