

\$624,900 - 4855 Hawthorn Bend, Edmonton

MLS® #E4426356

\$624,900

4 Bedroom, 3.00 Bathroom, 1,938 sqft
Single Family on 0.00 Acres

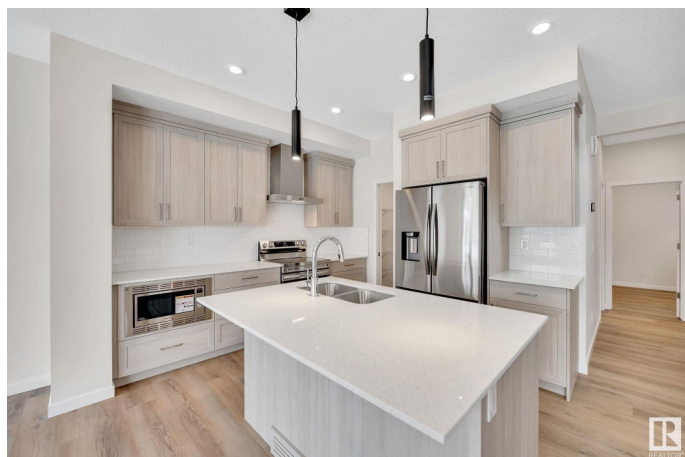
The Orchards At Ellerslie, Edmonton, AB

Welcome to this brand-new 4-bed, 3-bath home in the desirable Orchards Community, SW Edmonton! With over 1900 sq. ft., it blends comfort & style. The main floor features a spacious upgraded kitchen with stainless steel appliances, modern cabinetry & a large island, opening into the living & dining areas—perfect for gatherings. A bedroom & full bath on the main level make it ideal for guests or main-floor living. Upstairs, the primary suite offers a 4-piece ensuite & walk-in closet, plus 2 more bedrooms (one with a walk-in closet), a bonus room & upstairs laundry. Sitting on a large lot with a double garage & huge backyard, this home has a separate side entrance for future development. Close to parks, schools, shopping & major roads—ready to welcome you!

Built in 2024

Essential Information

| | |
|----------------|-----------|
| MLS® # | E4426356 |
| Price | \$624,900 |
| Bedrooms | 4 |
| Bathrooms | 3.00 |
| Full Baths | 3 |
| Square Footage | 1,938 |
| Acres | 0.00 |
| Year Built | 2024 |



| | |
|----------|------------------------|
| Type | Single Family |
| Sub-Type | Detached Single Family |
| Style | 2 Storey |
| Status | Active |

Community Information

| | |
|-------------|---------------------------|
| Address | 4855 Hawthorn Bend |
| Area | Edmonton |
| Subdivision | The Orchards At Ellerslie |
| City | Edmonton |
| County | ALBERTA |
| Province | AB |
| Postal Code | T6X 3A9 |

Amenities

| | |
|-----------|--|
| Amenities | Ceiling 9 ft., No Animal Home, No Smoking Home |
| Parking | Double Garage Attached |

Interior

| | |
|-------------------|--|
| Interior Features | ensuite bathroom |
| Appliances | Dishwasher-Built-In, Dryer, Hood Fan, Refrigerator, Stove-Electric, Washer |
| Heating | Forced Air-1, Natural Gas |
| Stories | 2 |
| Has Basement | Yes |
| Basement | Full, Unfinished |

Exterior

| | |
|-------------------|--|
| Exterior | Wood, Stone, Vinyl |
| Exterior Features | Airport Nearby, Playground Nearby, Public Transportation, Schools, Shopping Nearby |
| Roof | Asphalt Shingles |
| Construction | Wood, Stone, Vinyl |
| Foundation | Concrete Perimeter |

Additional Information

| | |
|----------------|------------------|
| Date Listed | March 19th, 2025 |
| Days on Market | 17 |
| Zoning | Zone 53 |

HOA Fees 450

HOA Fees Freq. Annually

DATA IS DEEMED RELIABLE BUT IS NOT GUARANTEED ACCURATE BY THE REALTORS® ASSOCIATION OF EDMONTON. COPYRIGHT 2025 BY THE REALTORS® ASSOCIATION OF EDMONTON. ALL RIGHTS RESERVED. Trademarks are owned or controlled by the Canadian Real Estate Association (CREA) and identify real estate professionals who are members of CREA (REALTOR®, REALTORS®) and/or the quality of services they provide (MLS®, Multiple Listing Service®)

Listing information last updated on April 4th, 2025 at 10:47pm MDT