

\$624,000 - 8 Everwood Close, St. Albert

MLS® #E4426430

\$624,000

5 Bedroom, 3.50 Bathroom, 1,747 sqft

Single Family on 0.00 Acres

Erin Ridge, St. Albert, AB

A rare find—this 5-bedroom, 2-storey home is tucked away on a quiet cul-de-sac in Erin Ridge, making it ideal for a large or growing family. Recently updated with a new roof and vinyl plank flooring on the second level (no carpet), the property offers modern comfort and style. On the main floor, you'll enjoy large windows, an open-concept living area with a gas fireplace, and a bright, spacious kitchen featuring an island, granite countertops, stainless steel appliances, and a large pantry. Garden doors off the dinette lead to a fully fenced backyard with a freshly painted deck. A 2-piece bath and laundry room complete this level. Upstairs, four generous bedrooms await, alongside a 3-piece bath and a 4-piece ensuite in the primary bedroom, which includes a big walk-in closet. The fully finished basement provides a fifth bedroom, a huge recreation room, a 3-piece bath, and storage space. Conveniently located near walking trails, schools, and amenities, this home is ready to welcome you!

Built in 2003

Essential Information

MLS® #	E4426430
Price	\$624,000
Bedrooms	5



Bathrooms 3.50
 Full Baths 3
 Half Baths 1
 Square Footage 1,747
 Acres 0.00
 Year Built 2003
 Type Single Family
 Sub-Type Detached Single Family
 Style 2 Storey
 Status Active

Community Information

Address 8 Everwood Close
 Area St. Albert
 Subdivision Erin Ridge
 City St. Albert
 County ALBERTA
 Province AB
 Postal Code T8N 7H1

Amenities

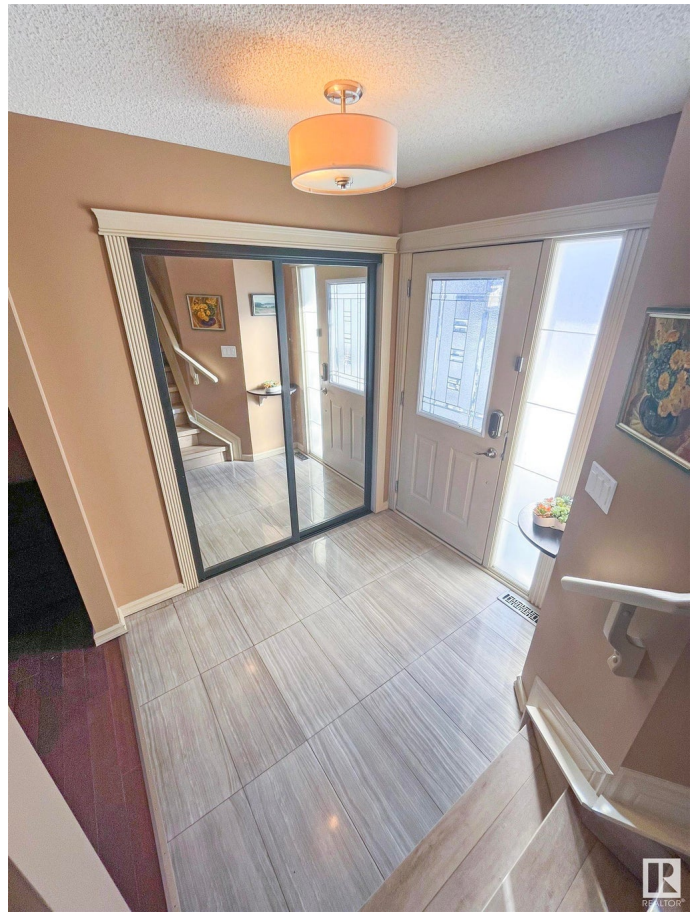
Amenities Deck, Wet Bar
 Parking Double Garage Attached

Interior

Interior Features ensuite bathroom
 Appliances Dishwasher-Built-In, Dryer, G
 Hood Fan, Refrigerator, Stor
 Coverings
 Heating Forced Air-1, Natural Gas
 Stories 3
 Has Basement Yes
 Basement Full, Finished

Exterior

Exterior Wood, Vinyl
 Exterior Features Fenced, Flat Site
 Roof Asphalt Shingles
 Construction Wood, Vinyl



Foundation Concrete Perimeter

Additional Information

Date Listed March 19th, 2025

Days on Market 16

Zoning Zone 24

DATA IS DEEMED RELIABLE BUT IS NOT GUARANTEED ACCURATE BY THE REALTORS® ASSOCIATION OF EDMONTON. COPYRIGHT 2025 BY THE REALTORS® ASSOCIATION OF EDMONTON. ALL RIGHTS RESERVED. Trademarks are owned or controlled by the Canadian Real Estate Association (CREA) and identify real estate professionals who are members of CREA (REALTOR®, REALTORS®) and/or the quality of services they provide (MLS®, Multiple Listing Service®)

Listing information last updated on April 4th, 2025 at 8:32pm MDT