

# \$799,000 - 11 Harley Way, Spruce Grove

MLS® #E4427764

**\$799,000**

3 Bedroom, 3.50 Bathroom, 2,674 sqft  
Single Family on 0.00 Acres

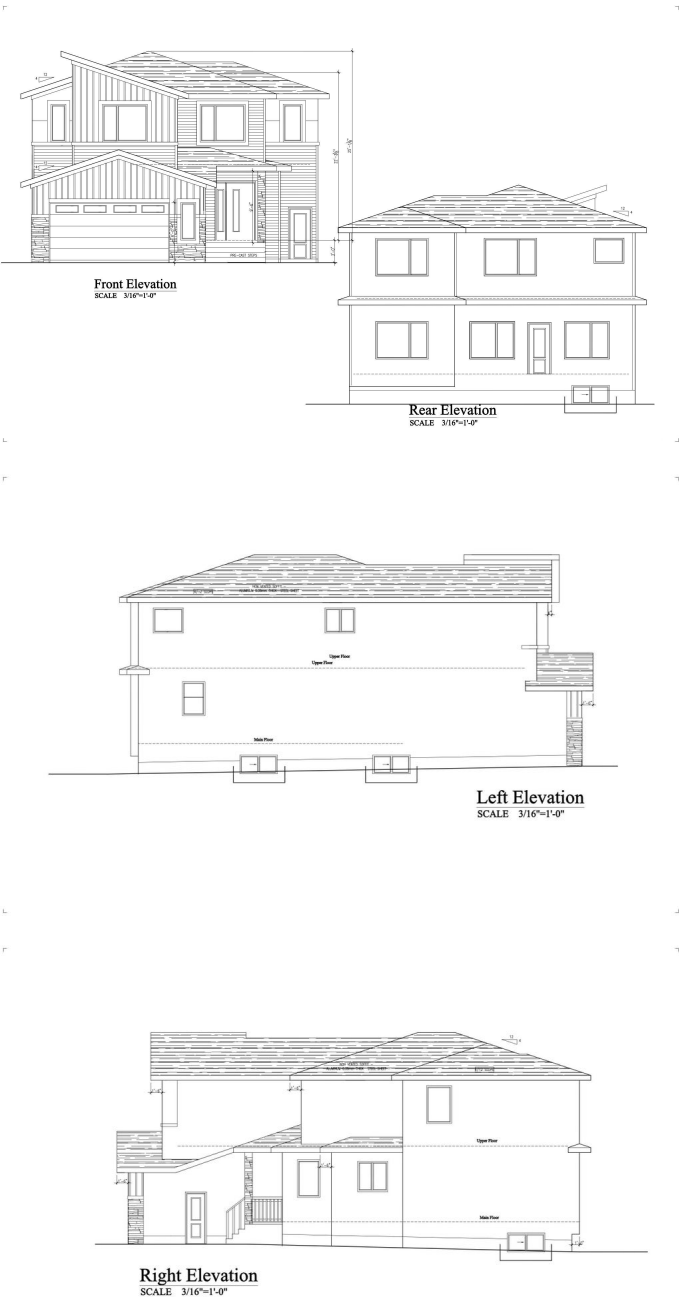
Hilldowns, Spruce Grove, AB

Welcome to your luxurious 2,675 sq. ft. home in the heart of Spruce Grove! Featuring an oversized double-attached garage and 9 ft ceilings on all three levels, this home offers a spacious, open feel. The main floor boasts a versatile office/den, a modern powder room, and a stunning open-to-below living area with a feature wall and electric fireplace. The gourmet kitchen impresses with ceiling-height cabinetry, quartz countertops, a walk-through pantry, and a mudroom. Upstairs, three primary bedrooms each offer a private ensuite and walk-in closet, alongside a bonus room and laundry room. High-end finishes, a separate side entrance to the basement, and a prime location near parks, shopping, and major roadways make this home an exceptional choice. Photos are from a similar home; actual finishes may vary.

Built in 2025

## Essential Information

MLS® #	E4427764
Price	\$799,000
Bedrooms	3
Bathrooms	3.50
Full Baths	3
Half Baths	1
Square Footage	2,674



Acres	0.00
Year Built	2025
Type	Single Family
Sub-Type	Detached Single Family
Style	2 Storey
Status	Active

### Community Information

Address	11 Harley Way
Area	Spruce Grove
Subdivision	Hilldowns
City	Spruce Grove
County	ALBERTA
Province	AB
Postal Code	T7X 0X4

### Amenities

Amenities	Ceiling 9 ft., Parking-Extra
Parking	Double Garage Attached

### Interior

Interior Features	ensuite bathroom
Appliances	Garage Control, Garage Opener, Hood Fan, Builder Appliance Credit
Heating	Forced Air-1, Natural Gas
Stories	2
Has Basement	Yes
Basement	Full, Unfinished

### Exterior

Exterior	Wood, Vinyl
Exterior Features	Golf Nearby, Playground Nearby, Public Transportation, Schools, Shopping Nearby
Roof	Asphalt Shingles
Construction	Wood, Vinyl
Foundation	Concrete Perimeter

### Additional Information

Date Listed	March 27th, 2025
Days on Market	21

## Zoning

## Zone 91

DATA IS DEEMED RELIABLE BUT IS NOT GUARANTEED ACCURATE BY THE REALTORS® ASSOCIATION OF EDMONTON. COPYRIGHT 2025 BY THE REALTORS® ASSOCIATION OF EDMONTON. ALL RIGHTS RESERVED. Trademarks are owned or controlled by the Canadian Real Estate Association (CREA) and identify real estate professionals who are members of CREA (REALTOR®, REALTORS®) and/or the quality of services they provide (MLS®, Multiple Listing Service®)

Listing information last updated on April 16th, 2025 at 10:47pm MDT