

Courtesy Of David J Schmitz Of RE/MAX River City

\$294,900 - 316 10545 Saskatchewan Drive, Edmonton

MLS® #E4428291

\$294,900

2 Bedroom, 2.00 Bathroom, 973 sqft
Condo / Townhouse on 0.00 Acres

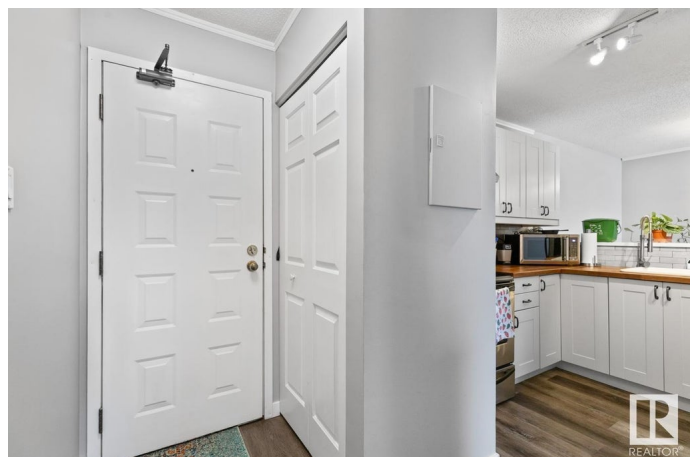
Strathcona, Edmonton, AB

Welcome to this bright and spacious 2 bed, 2 bath apartment that offers 973 sq ft of living space! The primary suite boasts a 4-piece ensuite, while the open-concept kitchen offers ample storage, perfect for all your culinary needs. Enjoy your morning coffee on the large north-facing balcony with beautiful downtown views. This well-appointed building features fantastic amenities, including a gym and an amenities room for your needs. Plus, enjoy the convenience of heated, underground parking. Located in a prime central location, you're just minutes from downtown, the river valley, and all essential amenities, with quick access to the entire city. Whether you're looking for comfort, convenience, or a vibrant urban lifestyle, this is the perfect place to call home!

Built in 1984

Essential Information

MLS® #	E4428291
Price	\$294,900
Bedrooms	2
Bathrooms	2.00
Full Baths	2
Square Footage	973
Acres	0.00
Year Built	1984



Type	Condo / Townhouse
Sub-Type	Lowrise Apartment
Style	Single Level Apartment
Status	Active

Community Information

Address	316 10545 Saskatchewan Drive
Area	Edmonton
Subdivision	Strathcona
City	Edmonton
County	ALBERTA
Province	AB
Postal Code	T6E 6C6

Amenities

Amenities	See Remarks
Parking	Heated, Underground

Interior

Interior Features	ensuite bathroom
Appliances	Dishwasher-Built-In, Dryer, Refrigerator, Stove-Electric, Washer, Window Coverings
Heating	Baseboard, Oil
# of Stories	12
Stories	1
Has Basement	Yes
Basement	None, No Basement

Exterior

Exterior	Wood, Brick
Exterior Features	Public Transportation, Schools, Shopping Nearby, View Downtown, See Remarks
Roof	Asphalt Shingles
Construction	Wood, Brick
Foundation	Concrete Perimeter

Additional Information

Date Listed	March 31st, 2025
Days on Market	4

Zoning	Zone 15
Condo Fee	\$451

DATA IS DEEMED RELIABLE BUT IS NOT GUARANTEED ACCURATE BY THE REALTORS® ASSOCIATION OF EDMONTON. COPYRIGHT 2025 BY THE REALTORS® ASSOCIATION OF EDMONTON. ALL RIGHTS RESERVED. Trademarks are owned or controlled by the Canadian Real Estate Association (CREA) and identify real estate professionals who are members of CREA (REALTOR®, REALTORS®) and/or the quality of services they provide (MLS®, Multiple Listing Service®)

Listing information last updated on April 4th, 2025 at 3:17pm MDT