

Courtesy Of Jay Lewis Of RE/MAX Excellence

## \$445,000 - 105 Brickyard Drive, Stony Plain

MLS® #E4428456

**\$445,000**

3 Bedroom, 2.50 Bathroom, 1,373 sqft  
Single Family on 0.00 Acres

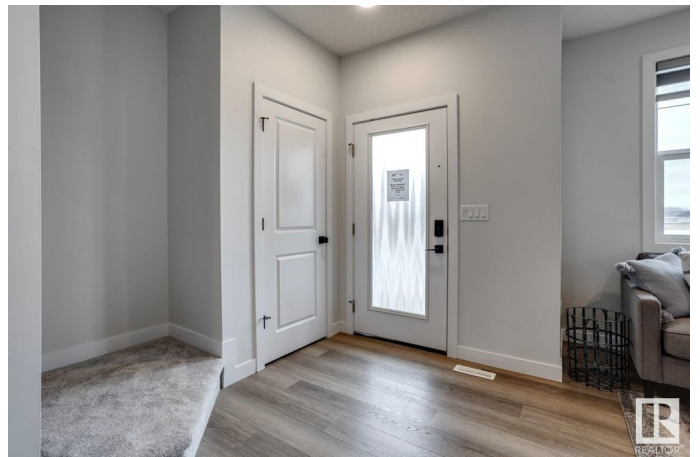
Brickyard, Stony Plain, AB

Welcome to this stunning new build two-storey home in the highly sought-after and upcoming Brickyard community. The main level boasts a bright, spacious, open-concept design, perfect for modern living and entertaining. The living room features a cozy electric fireplace, creating a warm and inviting atmosphere. The well-appointed kitchen has sleek stainless steel appliances, a breakfast bar for casual dining, and plenty of storage space. A mudroom, complete with a bench and cubbies to keep your space organized, is conveniently located at the back entrance. A 2pc bath is also on the main level for added convenience. Upstairs, you'll find a thoughtfully designed layout with 3 spacious bedrooms, laundry and a 4pc bath. The primary bedroom includes a 4-piece ensuite and walk-in closet. This home is the perfect blend of functionality and style, set in a vibrant, growing community. Don't miss your chance to make it yours!  
\*Photos are representative\*

Built in 2025

### Essential Information

MLS® #	E4428456
Price	\$445,000
Bedrooms	3
Bathrooms	2.50



Full Baths	2
Half Baths	1
Square Footage	1,373
Acres	0.00
Year Built	2025
Type	Single Family
Sub-Type	Detached Single Family
Style	2 Storey
Status	Active

### **Community Information**

Address	105 Brickyard Drive
Area	Stony Plain
Subdivision	Brickyard
City	Stony Plain
County	ALBERTA
Province	AB
Postal Code	T7Z 1C3

### **Amenities**

Amenities	Ceiling 9 ft., No Animal Home, No Smoking Home
Parking	No Garage

### **Interior**

Interior Features	ensuite bathroom
Appliances	Dishwasher-Built-In, Microwave Hood Fan, Refrigerator, Stove-Electric
Heating	Forced Air-1, Natural Gas
Fireplace	Yes
Fireplaces	Insert
Stories	2
Has Basement	Yes
Basement	Full, Unfinished

### **Exterior**

Exterior	Wood, Vinyl
Exterior Features	Back Lane, Park/Reserve, Playground Nearby, Schools, Shopping Nearby
Roof	Asphalt Shingles
Construction	Wood, Vinyl

Foundation            Concrete Perimeter

### **Additional Information**

Date Listed            April 1st, 2025

Days on Market      3

Zoning                 Zone 91

DATA IS DEEMED RELIABLE BUT IS NOT GUARANTEED ACCURATE BY THE REALTORS® ASSOCIATION OF EDMONTON. COPYRIGHT 2025 BY THE REALTORS® ASSOCIATION OF EDMONTON. ALL RIGHTS RESERVED. Trademarks are owned or controlled by the Canadian Real Estate Association (CREA) and identify real estate professionals who are members of CREA (REALTOR®, REALTORS®) and/or the quality of services they provide (MLS®, Multiple Listing Service®)

Listing information last updated on April 3rd, 2025 at 10:17pm MDT