

## \$784,900 - 2508 210 Street, Edmonton

MLS® #E4428571

**\$784,900**

6 Bedroom, 4.00 Bathroom, 2,284 sqft  
Single Family on 0.00 Acres

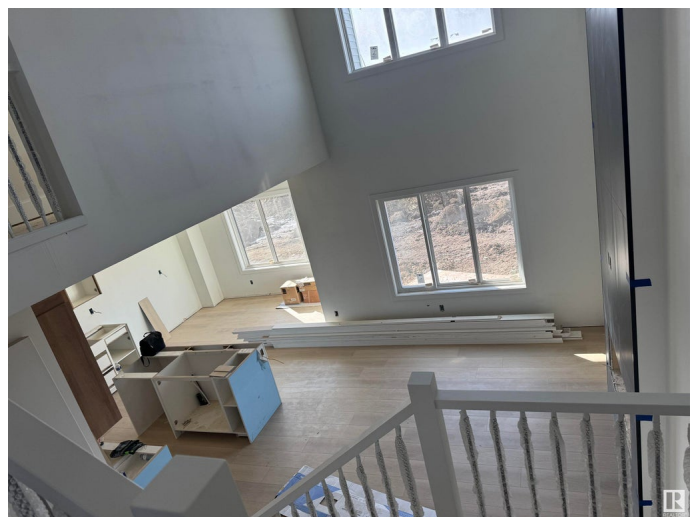
The Uplands, Edmonton, AB

This is Beauty on a wonderful street LEGAL 2 BEDROOM BASEMENT SUITE WITH SEPARATE SIDE ENTRANCE. This stunning home featuring a total of 6-bedrooms and 4-bathrooms offers over 3,000 sq. ft. of well-designed space—perfect for a growing family. On the main floor, there’s a den and full bath, great for guests or practical living. The open-to-below living area feels bright and spacious, while the chef’s kitchen is a great touch. Upstairs, you’ll find four large bedrooms, including a primary suite with a beautiful ensuite, plus a bonus room for extra space and convenient second-floor laundry. The basement features a fully finished 2-bedroom legal suite with a private entrance—ideal for rental income or extended family. Located in the sought-after Uplands community, you’ll have easy access to schools, shopping, and everything you need, plus quick access to Anthony Henday Drive for a smooth commute.

Built in 2025

### Essential Information

|           |           |
|-----------|-----------|
| MLS® #    | E4428571  |
| Price     | \$784,900 |
| Bedrooms  | 6         |
| Bathrooms | 4.00      |



|                |                        |
|----------------|------------------------|
| Full Baths     | 4                      |
| Square Footage | 2,284                  |
| Acres          | 0.00                   |
| Year Built     | 2025                   |
| Type           | Single Family          |
| Sub-Type       | Detached Single Family |
| Style          | 2 Storey               |
| Status         | Active                 |

### **Community Information**

|             |                 |
|-------------|-----------------|
| Address     | 2508 210 Street |
| Area        | Edmonton        |
| Subdivision | The Uplands     |
| City        | Edmonton        |
| County      | ALBERTA         |
| Province    | AB              |
| Postal Code | T6M 2M7         |

### **Amenities**

|                |                        |
|----------------|------------------------|
| Amenities      | See Remarks            |
| Parking Spaces | 4                      |
| Parking        | Double Garage Attached |

### **Interior**

|                   |                           |
|-------------------|---------------------------|
| Interior Features | ensuite bathroom          |
| Appliances        | See Remarks               |
| Heating           | Forced Air-1, Natural Gas |
| Fireplace         | Yes                       |
| Fireplaces        | Insert                    |
| Stories           | 3                         |
| Has Basement      | Yes                       |
| Basement          | Full, Finished            |

### **Exterior**

|                   |                                                                           |
|-------------------|---------------------------------------------------------------------------|
| Exterior          | Wood, Vinyl                                                               |
| Exterior Features | Playground Nearby, Schools, Shopping Nearby, Ski Hill Nearby, See Remarks |
| Roof              | Asphalt Shingles                                                          |
| Construction      | Wood, Vinyl                                                               |

Foundation Concrete Perimeter

### Additional Information

Date Listed April 2nd, 2025

Days on Market 2

Zoning Zone 57



DATA IS DEEMED RELIABLE BUT IS NOT GUARANTEED ACCURATE BY THE REALTORS® ASSOCIATION OF EDMONTON. COPYRIGHT 2025 BY THE REALTORS® ASSOCIATION OF EDMONTON. ALL RIGHTS RESERVED. Trademarks are owned or controlled by the Canadian Real Estate Association (CREA) and identify real estate professionals who are members of CREA (REALTOR®, REALTORS®) and/or the quality of services they provide (MLS®, Multiple Listing Service®)

Listing information last updated on April 4th, 2025 at 5:47pm MDT