

Courtesy Of Brendan R Rost Of MaxWell Polaris

\$244,900 - 10 1440 Sherwood Drive, Sherwood Park

MLS® #E4428697

\$244,900

2 Bedroom, 1.50 Bathroom, 553 sqft
Condo / Townhouse on 0.00 Acres

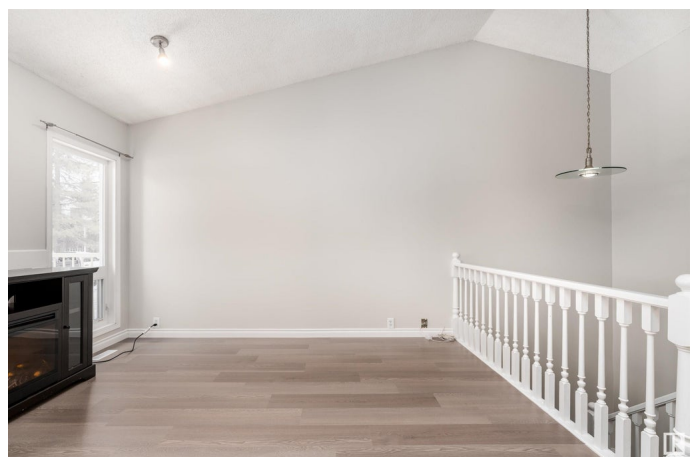
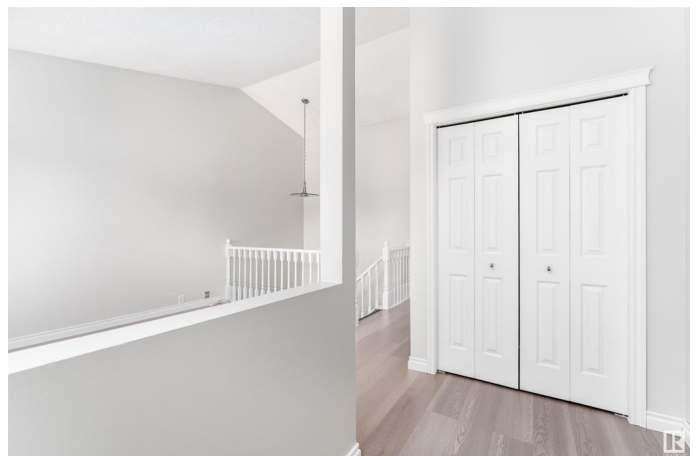
Sherwood Heights, Sherwood Park, AB

Freshly renovated! Immediate Possession!!
Welcome to Summa Glen located in Sherwood Heights, this spotless, move-in-ready, 2-bedroom condo with 1098 sqft of living space on two levels is one of the most affordable townhomes on the market and has tons to offer! It is surrounded by parks, close to the golf course, walking distance to the rec center, Festival Place, shopping, restaurants & more! Main floor has a large, bright living space with vaulted ceilings and ELECTRIC FIREPLACE. Kitchen and dining area get tons of light with patio doors accessing the 2024 built deck and backyard space. Downstairs are two large bedrooms with LVP flooring. Primary bedroom has exterior doors to a super cute below grade patio. Rounding out the basement is a 4 piece bathroom, laundry, utilities, and storage. NEW SIDING, PAINT, DECKS, MAIN FLOOR FLOORING. 2 PARKING STALLS right in front with additional visitor parking steps away. NO MONTHLY SPECIAL ASSESSMENT PAYMENT. Assessment was paid in full by Seller.

Built in 1983

Essential Information

MLS® #	E4428697
Price	\$244,900



Bedrooms	2
Bathrooms	1.50
Full Baths	1
Half Baths	1
Square Footage	553
Acres	0.00
Year Built	1983
Type	Condo / Townhouse
Sub-Type	Townhouse
Style	2 Storey
Status	Active

Community Information

Address	10 1440 Sherwood Drive
Area	Sherwood Park
Subdivision	Sherwood Heights
City	Sherwood Park
County	ALBERTA
Province	AB
Postal Code	T8A 4W3

Amenities

Amenities	Deck, Detectors Smoke, Hot Water Natural Gas, No Smoking Home, Parking-Visitor
Parking	Stall

Interior

Appliances	Dishwasher - Energy Star, Hood Fan, Refrigerator, Stacked Washer/Dryer, Stove-Electric
Heating	Forced Air-1, Natural Gas
Fireplace	Yes
Fireplaces	Vent Free, Wall Mount
Stories	2
Has Basement	Yes
Basement	Full, Finished

Exterior

Exterior	Wood, Vinyl
Exterior Features	Golf Nearby, No Through Road, Playground Nearby, Public

Transportation, Schools, Shopping Nearby

Roof Asphalt Shingles
Construction Wood, Vinyl
Foundation Wood

Additional Information

Date Listed April 2nd, 2025
Days on Market 2
Zoning Zone 25
Condo Fee \$366

DATA IS DEEMED RELIABLE BUT IS NOT GUARANTEED ACCURATE BY THE REALTORS® ASSOCIATION OF EDMONTON. COPYRIGHT 2025 BY THE REALTORS® ASSOCIATION OF EDMONTON. ALL RIGHTS RESERVED. Trademarks are owned or controlled by the Canadian Real Estate Association (CREA) and identify real estate professionals who are members of CREA (REALTOR®, REALTORS®) and/or the quality of services they provide (MLS®, Multiple Listing Service®)

Listing information last updated on April 4th, 2025 at 2:47pm MDT