

Courtesy Of Brent Anderson Of Century 21 Masters

## \$599,900 - 10436 18 Avenue, Edmonton

MLS® #E4429033

**\$599,900**

4 Bedroom, 2.50 Bathroom, 2,125 sqft

Single Family on 0.00 Acres

Keheewin, Edmonton, AB

Growing families, here's your perfect fit! Bright, airy + updated 2100 sq ft two-storey home with 4 large bedrooms upstairs! You'll love the brand new white quartz kitchen (2021) with s/s appliances + a 4x5 ft island! Enjoy new triple-pane windows throughout (2015-2020), new shingles (2020) as well as textured walnut LVP flooring (2017)! The main level of this home offers a harmonious blend of elegance + functionality. Enjoy the cozy sunken living room. Relax in the huge primary suite featuring a bay window, his + her closets, + spacious en-suite with double sinks. The modern finished basement (2013) offers a large rec room + plenty of storage or room to grow. You + your kids will love the big backyard where you will enjoy loads of summer fun with family-friendly cul-de-sac, + 2-minute walk to buses, school, playground + green spaces, including an off-leash park. Amenities at your fingertips with LRT, Century Park shopping centers + South Common just a stone's throw away. Don't miss this one!

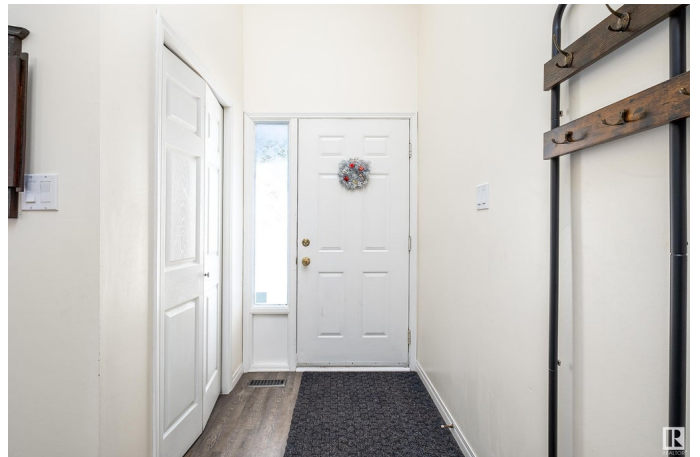
Built in 1981

### Essential Information

MLS® # E4429033

Price \$599,900

Bedrooms 4



Bathrooms	2.50
Full Baths	2
Half Baths	1
Square Footage	2,125
Acres	0.00
Year Built	1981
Type	Single Family
Sub-Type	Detached Single Family
Style	2 Storey
Status	Active

### **Community Information**

Address	10436 18 Avenue
Area	Edmonton
Subdivision	Keheewin
City	Edmonton
County	ALBERTA
Province	AB
Postal Code	T6J 4Z8

### **Amenities**

Amenities	Deck, Detectors Smoke, No Animal Home, No Smoking Home, Vaulted Ceiling
Parking Spaces	2
Parking	Double Garage Attached

### **Interior**

Interior Features	ensuite bathroom
Appliances	Air Conditioning-Central, Dishwasher-Built-In, Dryer, Garage Control, Garage Opener, Microwave Hood Fan, Refrigerator, Storage Shed, Washer, Window Coverings, See Remarks, Stove-Induction, TV Wall Mount
Heating	Forced Air-1, Natural Gas
Fireplace	Yes
Fireplaces	Brick Facing
Stories	3
Has Basement	Yes
Basement	Full, Partially Finished

### **Exterior**

Exterior	Wood, Brick, Vinyl
Exterior Features	Airport Nearby, Fenced, Golf Nearby, Landscaped, Playground Nearby, Public Transportation, Schools, Shopping Nearby
Roof	Asphalt Shingles
Construction	Wood, Brick, Vinyl
Foundation	Concrete Perimeter

### **School Information**

Elementary	Keheewin School
Middle	D.S. MacKenzie School
High	Harry Ainlay School

### **Additional Information**

Date Listed	April 4th, 2025
Days on Market	1
Zoning	Zone 16

DATA IS DEEMED RELIABLE BUT IS NOT GUARANTEED ACCURATE BY THE REALTORS® ASSOCIATION OF EDMONTON. COPYRIGHT 2025 BY THE REALTORS® ASSOCIATION OF EDMONTON. ALL RIGHTS RESERVED. Trademarks are owned or controlled by the Canadian Real Estate Association (CREA) and identify real estate professionals who are members of CREA (REALTOR®, REALTORS®) and/or the quality of services they provide (MLS®, Multiple Listing Service®)

Listing information last updated on April 5th, 2025 at 12:17am MDT