

\$536,500 - 9833 68 Avenue, Edmonton

MLS® #E4429279

\$536,500

5 Bedroom, 2.00 Bathroom, 1,206 sqft
Single Family on 0.00 Acres

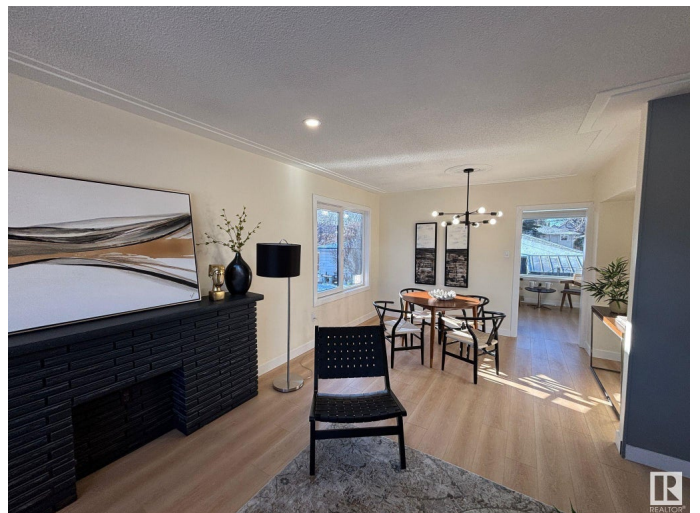
Hazeldean, Edmonton, AB

STEPS FROM MILL CREEK RAVINE and HAPPY BEER STREET—your new lifestyle starts HERE. Hike, bike, or stroll the RAVINE TRAILS, grab a pint at local breweries, or sip a latte at one of the nearby caf s. Hazeldean is a hidden gem with a strong COMMUNITY LEAGUE, parks, playgrounds, and quick access to Whyte Ave. This RENOVATED 5-BED, 2-BATH home has a SEPARATE ENTRANCE to a bright in-law suite. Inside: OPEN-CONCEPT layout, custom cabinets, QUARTZ, pot lights, and new German tilt & turn windows. Massive primary, DOUBLE GARAGE, fenced yard, and upgraded landscaping. Live where the good vibes are.

Built in 1956

Essential Information

MLS® #	E4429279
Price	\$536,500
Bedrooms	5
Bathrooms	2.00
Full Baths	2
Square Footage	1,206
Acres	0.00
Year Built	1956
Type	Single Family
Sub-Type	Detached Single Family



Style Raised Bungalow
Status Active

Community Information

Address 9833 68 Avenue
Area Edmonton
Subdivision Hazeldean
City Edmonton
County ALBERTA
Province AB
Postal Code T6E 0R4

Amenities

Amenities See Remarks
Parking Spaces 4
Parking Double Garage Detached

Interior

Appliances Dryer, Garage Opener, Hood Fan, Washer, Refrigerators-Two, Stoves-Two
Heating Forced Air-1, Natural Gas
Stories 2
Has Suite Yes
Has Basement Yes
Basement Full, Finished

Exterior

Exterior Wood, Stucco
Exterior Features Back Lane, Fenced, Playground Nearby, Schools, Shopping Nearby, See Remarks
Roof Asphalt Shingles
Construction Wood, Stucco
Foundation Concrete Perimeter

Additional Information

Date Listed April 5th, 2025
Days on Market 19
Zoning Zone 17

RESERVED. Trademarks are owned or controlled by the Canadian Real Estate Association (CREA) and identify real estate professionals who are members of CREA (REALTOR®®, REALTORS®®) and/or the quality of services they provide (MLS®®, Multiple Listing Service®®)

Listing information last updated on April 24th, 2025 at 8:32pm MDT