

Courtesy Of Tiffany Mclellan Of RE/MAX Elite

\$188,000 - 892 Abbottsfield Road, Edmonton

MLS® #E4429304

\$188,000

3 Bedroom, 1.50 Bathroom, 996 sqft
Condo / Townhouse on 0.00 Acres

Abbottsfield, Edmonton, AB

INVESTOR or FIRST TIME BUYER MUST SEE! 3BDRM 1.5BATH. New Kitchen countertops and undermount sink and more upgrades. Whether you work in South Edmonton, Sherwood Park, Fort Saskatchewan or the Military base this home is just off of Victoria Trail which has easy access to the Yellowhead and Henday!! This townhome is conveniently located close to schools, transportation and shopping. Has recent updates throughout. Living room enters into backyard which backs on to greenspace. The condo has VERY LOW CONDO FEES at only \$200/month. The entrance level is finished - so you can use it as an office or extra storage. This property is steps away from Abbott School as well as a playground, transportation stops are just outside the complex on the road, shopping with a No Frills, public library and so many other amenities nearby.



Built in 1972

Essential Information

MLS® #	E4429304
Price	\$188,000
Bedrooms	3
Bathrooms	1.50
Full Baths	1

Half Baths 1
 Square Footage 996
 Acres 0.00
 Year Built 1972
 Type Condo / Townhouse
 Sub-Type Townhouse
 Style 2 and Half Storey
 Status Active

Community Information

Address 892 Abbottsfield Road
 Area Edmonton
 Subdivision Abbottsfield
 City Edmonton
 County ALBERTA
 Province AB
 Postal Code T5W 4R4

Amenities

Amenities See Remarks
 Parking Single Carport

Interior

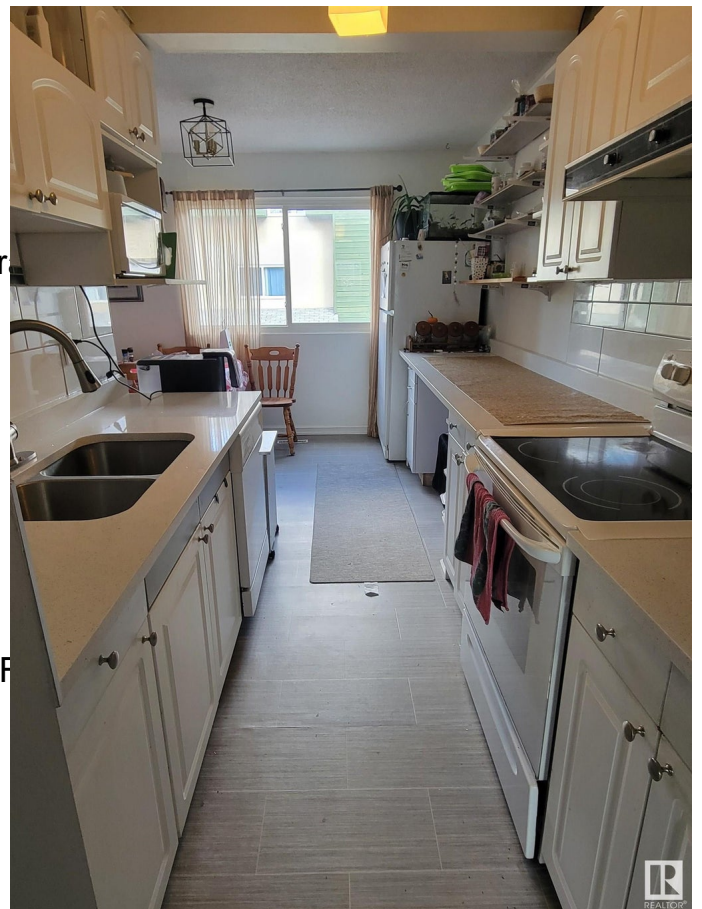
Appliances Dishwasher-Built-In, Refrigerator
 Heating Forced Air-1, Natural Gas
 Stories 3
 Has Basement Yes
 Basement Partial, Finished

Exterior

Exterior Wood, Stucco
 Exterior Features Backs Onto Park/Trees, F
 Nearby
 Roof Asphalt Shingles
 Construction Wood, Stucco
 Foundation Concrete Perimeter

Additional Information

Date Listed April 5th, 2025



Days on Market	18
Zoning	Zone 23
Condo Fee	\$200

DATA IS DEEMED RELIABLE BUT IS NOT GUARANTEED ACCURATE BY THE REALTORS® ASSOCIATION OF EDMONTON. COPYRIGHT 2025 BY THE REALTORS® ASSOCIATION OF EDMONTON. ALL RIGHTS RESERVED. Trademarks are owned or controlled by the Canadian Real Estate Association (CREA) and identify real estate professionals who are members of CREA (REALTOR®, REALTORS®) and/or the quality of services they provide (MLS®, Multiple Listing Service®)

Listing information last updated on April 23rd, 2025 at 1:47pm MDT