

## \$99,900 - 306 8310 Jasper Avenue, Edmonton

MLS® #E4430378

**\$99,900**

1 Bedroom, 1.00 Bathroom, 586 sqft

Condo / Townhouse on 0.00 Acres

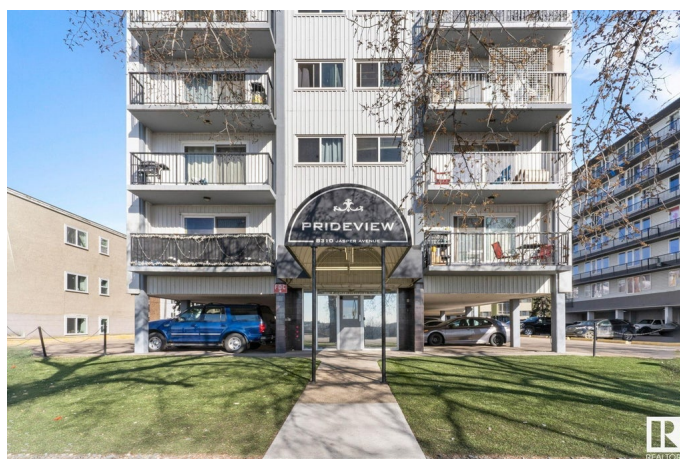
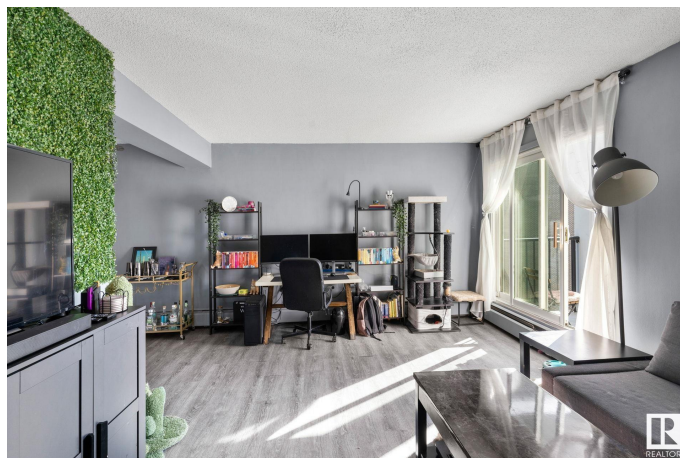
Cromdale, Edmonton, AB

Experience downtown Edmonton at its best with this well-maintained one-bedroom unit showcasing stunning views of the Saskatchewan River Valley. Ideal for investors or first-time buyers, this bright and modern suite offers both lifestyle and long-term value. It includes a portable in-suite washer and dryer, plus access to coin-operated laundry in the building—adding flexibility and everyday convenience. The unit also comes with an energized parking stall. Conveniently located just steps from shopping, transit, and more, this gem features elevator access and professional management for added peace of mind. Whether you're growing your portfolio or looking for a low-maintenance city home, this one checks all the boxes.

Built in 1968

### Essential Information

MLS® #	E4430378
Price	\$99,900
Bedrooms	1
Bathrooms	1.00
Full Baths	1
Square Footage	586
Acres	0.00
Year Built	1968



Type	Condo / Townhouse
Sub-Type	Lowrise Apartment
Style	Single Level Apartment
Status	Active

### Community Information

Address	306 8310 Jasper Avenue
Area	Edmonton
Subdivision	Cromdale
City	Edmonton
County	ALBERTA
Province	AB
Postal Code	T5H 3S3

### Amenities

Amenities	Intercom, No Smoking Home, Parking-Plug-Ins
Parking	Stall

### Interior

Appliances	Dishwasher-Built-In, Hood Fan, Oven-Microwave, Refrigerator, Stove-Electric
Heating	Hot Water, Natural Gas
# of Stories	6
Stories	4
Has Basement	Yes
Basement	None, No Basement

### Exterior

Exterior	Wood, Metal
Exterior Features	Public Transportation, Schools, Shopping Nearby, View Downtown
Roof	Tar & Gravel
Construction	Wood, Metal
Foundation	Concrete Perimeter

### Additional Information

Date Listed	April 11th, 2025
Days on Market	10
Zoning	Zone 09
Condo Fee	\$546

DATA IS DEEMED RELIABLE BUT IS NOT GUARANTEED ACCURATE BY THE REALTORS® ASSOCIATION OF EDMONTON. COPYRIGHT 2025 BY THE REALTORS® ASSOCIATION OF EDMONTON. ALL RIGHTS RESERVED. Trademarks are owned or controlled by the Canadian Real Estate Association (CREA) and identify real estate professionals who are members of CREA (REALTOR®, REALTORS®) and/or the quality of services they provide (MLS®, Multiple Listing Service®)

Listing information last updated on April 21st, 2025 at 6:47pm MDT